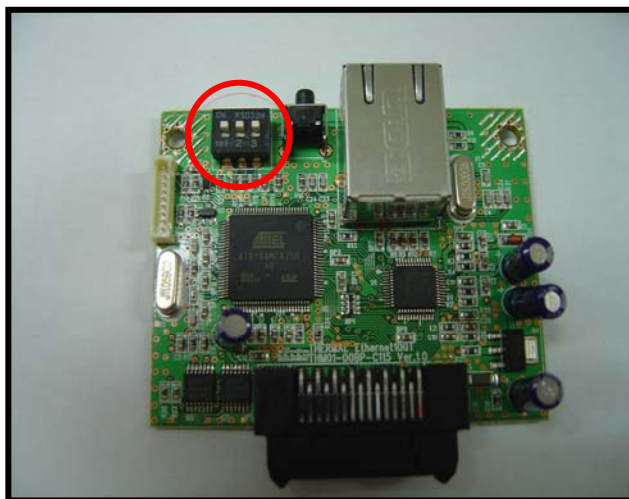


Ethernet I/F Card (Interchangeable with WTP-150 and LK-T21)

1. Check the settings on the back side of the I/F Card

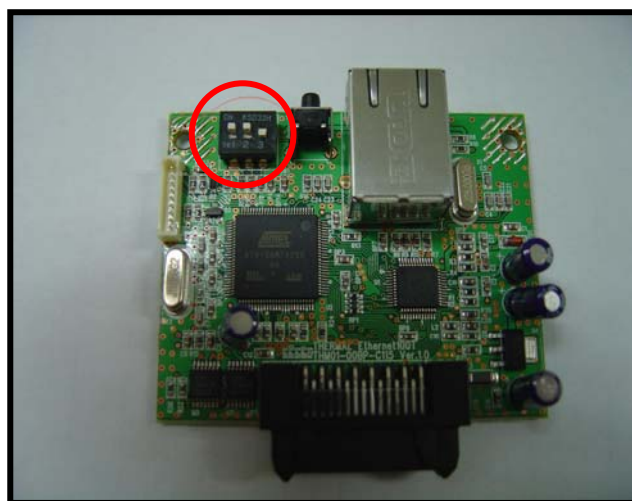


2. Switch setting for WTP-150



SW1	SW2	SW3
ON	ON	ON

2. Switch setting for LK-T21



SW1	SW2	SW3
ON	ON	OFF

Cf) USB I/F Card

	SW1	SW2
WTP-150	OFF	OFF
LK-T21	ON	ON