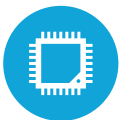




HIGHLIGHTS



Intel® Celeron® Quad Core Processor J1900 2.0 Ghz



5 USB Ports, 3 Serials Ports, 1 Cash Drawer, and 1 Gigabit LAN



Foldable Stand for Ergonomic Small Footprint



14.1" Widescreen HD LED LCD



Fanless and Ventless Design

SPECIFICATIONS

MOTHERBOARD

Processor: Intel® Celeron® Quad Core Processor J1900 2.0 Ghz
Chipset: Intel® NM70 Chipset
System Memory: 1xDDR3L SoDimmup to 8GB, 1333Mhz
Cache: 2MB

DISPLAY

LCD Size: 14.1" Widescreen
LCD Resolution: 1366 x 768
LCD Brightness: 200 cd/m2
LCD Backlight Type: LED
LCD Aspect Ratio: 16:9
Touch Glass: Projected Capacitive

STORAGE

Solid State Disk: 2.5" SATA SSD

EXTERNAL I/O PORTS

Serial Port: 3 RJ45-RS232 ports (power option via jumper)
USB Port: 5x USB 2.0, 1x USB 3.0
Cash Drawer Port: 1
DC Jack: Lock-in 4PIN, 19V
MicroSD Slot: 1
Gigabit LAN Port: 1
VGA Port: 1
PS/2: 1
Audio Out: 1

EXPANSION

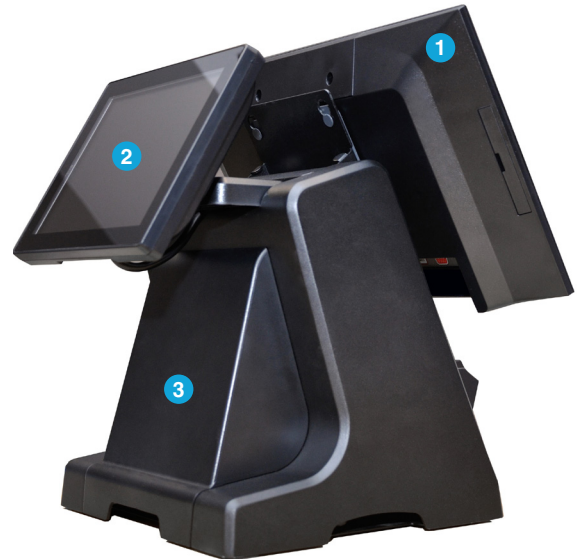
MiniPCI-e Slot: 1 (for wireless LAN)

OPTIONAL PERIPHERALS

MSR: Integrated USB MSR (encrypted option available)
Barcode Scanner: Integrated 2D Barcode Scanner (programmable)
Customer Display: Integrated Customer Display 2x20 (LCM), 8.4", 12", 14.1", and 15" LCD
Printer Base: Compatible with T25 or T70II Printer base options
Digital Persona: 1
Wireless LAN: Wireless a/b/g/n

TECHNICAL SPECS

Dimensions: 385x180x280mm (15" x 7" x 11") with base unfolded
Weight: 3.94kg (8.7lbs) with PSU
Mounting Option: 75mm x 75mm VESA
OS Supported: Windows 7, POS Ready 7, Windows 8, Windows 8 Embedded Retail, Win 10 IoT, and Win 10 Pro
64-bit Support: Yes



KEY

1	14.1 Widescreen LED Projected Capacitive Display
2	Optional Rear Customer Display (sizes available)
3	Optional Printer Base
4	Optional Integrated Fingerprint Reader
5	External I/O Ports (15 total)
6	Optional MSR