



**HIGHLIGHTS**



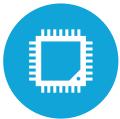
18.5" Projected Capacitive LED LCD



Rackable Motherboard



Up to 16GB RAM



Skylake CPU up to i5



Peripheral Options (MSR, fingerprint reader, and Ingenico pin pad)

# SPECIFICATIONS

## MOTHERBOARD

CPU & CPU Score:

Core™i5-6300u up to 3.0Ghz, L2 3MB, TDP 15W, 4309 Benchmark

Core™i3-6100u 2.3Ghz, L2 3MB, TDP 15W, 3512 Benchmark

Intel™ Celeron™ 3955U 2.0Ghz, L2, 2MB, TDP 15W, 2284 Benchmark

Chipset: Intel™ Skylake-U

System Memory: Dual Channel, So-DIMM x2 up to 16GB DDR3L, 1600/1866Mhz

Graphics: Intel™ HD Graphics 520 (i5-6300u), Intel™ HD Graphics 520 (i3-6100u),

Intel™ HD Graphics 510 (Celeron 3955u)

## LCD DISPLAY

LCD: 18.5"

Backlight Technology: LED

Aspect Ratio: 4:3

LCD Brightness: 300cd/m<sup>2</sup>

Touch: True Flat Projected Capacitive Touch

## STORAGE

HDD: One 2.5" SATA SSD

## EXPANSION

Mini-PCI Express Slot: 1

## EXTERNAL I/O PORTS

USB: 6 (2 x USB 2.1, 4 x USB 3.0)

Serial Ports: 4 x RJ45 (COM 2, 3, 4 power option +5/+12V)

Parallel Ports: N/A

PS2/Keyboard Port: N/A

Network: 2 x Gigabit LAN ports

Audio: 3.5mm jack line-out and 3.5 jack line-in (MIC-option)

Powered USB: Optional 1 x +12V and 1 x +24V

Cash Drawer Port: 1 x (+12V/+24V)

2nd VGA: 1 x D-sub15 (power option available)

3rd VGA: 1 x Display port

## POWER

Power Adapter: Integrated 90W 19V 3.4A DIN Connector

## OPTIONAL PERIPHERALS

MSR: ID Tech ISO 3-Track MSR (USB or PS2) Encrypted Magtek USB MSR

URU: Digital Persona URU (USB Interface)

Customer Display: 2x20 VFD; 8.4", 12.1", 15": 2nd Display, optional touch

Barcode Reader: Integrated 2D Barcode Reader

Wireless LAN: Mini PCI-E WLAN card, Intel, 1 x 1 IEEE 802.11 a/b/g/n/ac

Speaker: 2 x 2W Speakers for 15", 2 x 3W Speakers for 17"

## CERTIFICATE

EMC & Safety: FCC Class A, CE, LVD



## KEY FEATURES

1	18.5" LED LCD with Projected Capacitive Touch
2	Fingerprint Reader
3	MSR
4	Ingenico Pin Pad
5	Universal Printer Base
6	Mounted Barcode Scanner

## ENVIRONMENT

Operating & Storage Temperature: 0°C ~ 35°C (32°F ~ +95°F),  
-20°C ~ 60°C (-4°F ~ 140°F)

Operating & Storage Humidity: 20% ~ 85% RH non-condensing

Weight: 17lbs

Dimensions (with base & MSR): 13.6" x 16.9" x 9.9"

Dimensions (with bracket and pin pad): 21.25" x 11.25" x 16.5"

## OS SUPPORT

POS Ready 7, Windows 8.1 Industry Retail Pro, Windows 10 IOT,  
Windows 10 Pro, Linux (\*All OS options are 64-bit only)