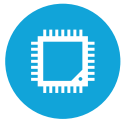




**HIGHLIGHTS**



Projected Capacitive Touch Screen



4 CPU Options Available (up to Intel i7)



Up to 16GB RAM



Rackable Motherboard



Multiple Peripheral Options

## SPECIFICATIONS

### PROCESSING

Intel Celeron G3930TE Dualcore 2.7Ghz  
Intel Core i3-7101TE Dualcore 3.4Ghz  
Intel Core i5-7500T Quadcore 2.7Ghz, up to 3.3Ghz  
Intel Core i7-7700T Quadcore 2.9Ghz, up to 3.8Ghz  
Memory: 2X DDR4-LV up to 16GB  
Graphics: Intel HD Graphics

### LCD PANEL

LCD Size: 15"  
LCD Type: LED LCD  
Brightness: 350 nits  
Maximum Resolution: 1024 x 768  
Touch Screen Type: Projected Capacitive  
Tilt Angle: 0° ~ 140°  
Screen: Bezel-less True Flat

### STORAGE

2x2.5" SATA with Raid 0, 1 and Hot swap

### POWER SUPPLY

120W +19V or 180W with powered USB Port

### DIMENSIONS

15" with base; 14.8" H x 8.3" W x 9" D (with MSR)  
Peripheral Variation (width only): 15 5/8" (with fingerprint)  
16" (with MSR and fingerprint)

### EXPANSION

M.2 Slot: 1 Optional

### I/O PORTS (STANDARD)

USB: 2 (USB 2.0) 4 (USB 3.0)  
Serial: 3xRJ45 with DB9 Adapters (COM3, 4 powered with 5V/12V, by BIOS)  
LAN: Gigabit LAN (10/100/1000)  
VGA: D-SUB 15 with power options via BIOS  
Display Port: 1  
Audio Out: 1

### I/O PORTS (OPTIONAL)

1: 2xUSB 2.0, RJ45 Gigabit LAN  
2: 1x Power USB +24V, 1x Power USB +12V, 1x CD  
3: 1x +28V Printer power port, 1x Power USB +12V, 1x CD

### OS SUPPORT

Windows 10 IOT & Pro (64 bit)



### KEY FEATURES

1	15" Projected Capacitive Touch Screen
2	Rackable motherboard from the top of unit
3	Optional MSR
4	Optional Steelcoat Fingerprint Reader