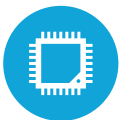




**HIGHLIGHTS**



Up to Intel i7 Processors



Up to 16GB RAM



Dual Gigabit LAN



Small Footprint



Multiple Port Options

# SPECIFICATIONS

## PROCESSING

CPU: G540 2.5G, 2MB Cache, G850 2.9G, 3MB Cache  
i3-2120 3.3G, 3MB Cache, i5-2400 3.1G, 6MB Cache, i7-2600 3.4G, 8MB Cache

Chipset: Intel Q67

System Memory: DDR3, Long-DIMM x2, up to 16GB, 1066/1333Mhz

LAN: Intel 82579LM (Phy), 2nd Gigabit LAN Controller WG82583V

Graphics: Intel HD Graphics 2000

## CONTROL INDICATOR

Power Indicator LED: 1

HDD Indicator LED: 1

## STORAGE

Hard drive storage 2x 3.5" bays to support SATA HDDs and SSDs

RAID 1/0

mSATA

## POWER

Power Adapter: Internal ATX 350W power supply

## OPTION

Serial Port: 6, DVI and 12V out card

Internal SSD: Multiple sizes available

Powered USB Module: Power USB 24V/X 1

SATA ODD: DVD RW

Mini PCI-e Wireless LAN: 1

Expansion card with Serial port, DVI and +12V out

Powered USB Hub: +24Vx1, +12Vx2, +5Vx1, 4x standard USB

## EXPANSION SLOTS

PCI express x16: 1

PCI: 1

## REAR I/O PORTS

USB: 2 front, 4 rear (USB 2.0)

+24V Power Out (Printer): 1

Cash Drawer: RJ-11 x 1 (12V/24V, default setting 24V)

Display Port: 1

VGA: D-SUB15 x1

Serial/COM: 5

Line Out: 1

Mic In: 1

Parallel: 1

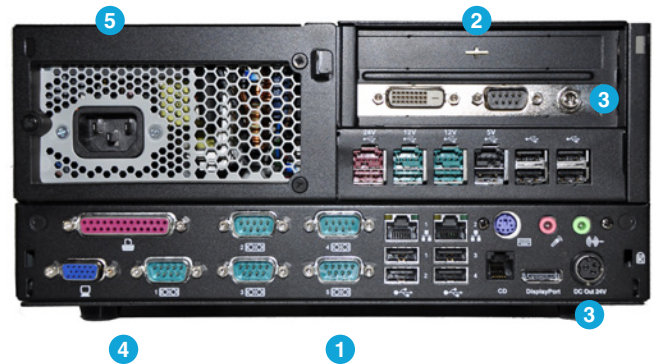
PS/2: 1

Gigabit LAN: 2

## SPECIFICATIONS

Dimensions: 10.6" x 11.8" x 4.7"

Weight: 15.43lbs



## KEY FEATURES

1	Rich I/O Port Selection
2	RAID Support with Hot Swap
3	+24V DC and +12V DC out
4	Display Port, VGA or DVI Support
5	Powered USB Hub Support

## ENVIRONMENT

Operating Temperature: 41°F ~ 105°C

Operating Humidity: 20% ~ 80% RH non condensing

Storage Temperature: 4°F ~ 140°F

Storage Humidity: 20% ~ 85% RH non condensing

## OS SUPPORT

POSReady 2009, PosReady7, Server 2012, Linux, Windows 10, Windows 10 IOT