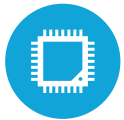




HIGHLIGHTS



Projected Capacitive Touch Screen



Intel® Celeron® Quad Core J1900



Up to 8GB RAM



Fanless All-In-One



Multiple Peripheral Options

SPECIFICATIONS

PROCESSING

CPU: Intel® Celeron Quad Core J1900 2.0Ghz (up to 2.42 Ghz)
 System Memory: 1x DDR3-LV SODIMM 4GB (up to 8GB Optional)
 Graphics Memory: Intel HD Graphics, DX11

LCD PANEL

LCD Size: 15"
 LCD Type: LED LCD
 Brightness: 350 nits
 Maximum Resolution: 1024 x 768
 Touch Screen Type: Projected Capacitive (USB Interface)
 Tilt Angle: 0° ~ 140°
 Screen: Bezel-less True Flat

STORAGE

Solid State Drive: Standard 128 GB SSD
 Optional 256 GB SSD

POWER

Power Supply: 65W +19V power adapter

EMC & Safety: FCC / CE Class A, LVD
 Operating Temperature: 5°C ~ 35°C (41°F ~ 95°F)

DIMENSIONS

15" with base; 13.6" H x 16.9" W x 9.9"
 Peripheral Variation (Width only): 15 5/8" (with fingerprint);
 16" (with MSR and Fingerprint)

EXPANSION

Mini PCIe Slot: 1

I/O PORTS

USB: 4 (USB 2.0) 1(USB 3.0)
 Serial: 3 x RJ45 with DB9 Adapters (COM3, 4 powered with 5V/12V, by Jumper)
 Gigabit LAN (10/100/1000): 1
 Cash Drawer Port: 1 RJ11 (12V / 24V)
 DC Jack: 1
 Power Button: 1
 PS/2: 1 Optional
 VGA Port: 1
 Audio Out: 1 Set (Optional)

OPTIONAL PERIPHERALS

MSR USB: Encrypted Option Available
 Fingerprint Reader: Digital Persona (USB Interface)
 Rear LCD: 8.4" x 15" (Touch Optional)
 Customer Display: 2 x 20 VFD Display
 Wireless LAN: 802.11 a/b/g/n
 Scanner: 2D Barcode Scanner
 Pin Pad Mount



KEY FEATURES

1	15 LED LCD Projected Capacitive Display
2	Bundles nicely with Printer and Cash Drawer
3	Affordable and reliable All In One
4	Optional Custom logos
5	Optional MSR

OS SUPPORT

POSREADY 7 (32 & 64 bit), Windows 8.1 Embedded Industry
 Retail Pro (64 bit), Windows 10 IOT & Pro (64 bit)