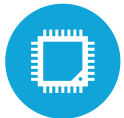




HIGHLIGHTS



Projected Capacitive Touch Screen



Intel® Celeron® Quad Core J1900 Processor



Available in 8.4" and 12.1"



Fanless Design



Multiple Peripheral Options

SPECIFICATIONS

Saturn All-in-One 8.4"

PROCESSING

CPU: Intel® Celeron® Quad Core J1900 up to 2.42 Ghz
System Memory: 1x DDR3L so-DIMM 4GB (up to 8GB), 1333 Mhz
Graphics Memory: Intel HD Graphics with Dx11 Support

LCD DISPLAY

LCD: 8.4" LED LCD
Touch: True Flat Projected Capacitive
Brightness: 380 NITS (LED LCD)
Maximum Resolution: 800x600
Backlight Type: LED

THERMAL SOLUTION

Fanless: Yes

STORAGE

Solid State Drive: Standard 128 GB SSD
Optional 256 GB SSD

REAR I/O PORTS

USB: 4 x USB 2.0, 1 x USB 3.0
VGA: 1 D-SUB15
Speakers: 2x2 Watts
LAN: Gigabit LAN controller 10/100/1000
2nd LAN: Optional
COM: COM x3 (COM1, COM2 standard, COM3 with +5V/ +12V Power)
Input Power: DC Jack with Locking Connector
Cash Drawer: 1
Power Switch: 1
PS2: N/A

EXPANSION

Slot: PCIe for wireless LAN or 2nd Gigabit NIC Expansion

PERIPHERALS

MSR: Magtek Edynamo MSR/EMV
Fingerprint Reader: Digital Persona (optional)
Internal Wireless/Bluetooth: a/b/g/n/ac (optional)
Multiple Base Options: Triangle, Desktop, Universal Printer Base

TECHNICAL SPECS

Specs: 9.75" x 7.5" x 2"
Power Adapter: 19V, 65W
IP Rating: IP54 Front Rating

OS SUPPORT

Windows 7 Pro, Pos Ready 7, Windows 10 IOT, Windows 10 Pro, Linux
64 Bit Support: Yes

Saturn All-in-One 12.1"

PROCESSING

CPU: Intel® Celeron® Quad Core J1900 up to 2.42 Ghz
System Memory: 1x DDR3L so-DIMM 4GB (up to 8GB), 1333 Mhz
Graphics Memory: Intel HD Graphics with Dx11 Support

LCD DISPLAY

LCD: 12.1" LED LCD
Touch: True Flat Projected Capacitive
Brightness: 500 NITS (LED LCD)
Maximum Resolution: 1024x768
Backlight Type: LED

THERMAL SOLUTION

Fanless: Yes

STORAGE

Solid State Drive: Standard 128 GB SSD
Optional 256 GB SSD

REAR I/O PORTS

USB: 4 x USB 2.0, 1 x USB 3.0
VGA: 1 D-SUB15
Speakers: 2x2 Watts
LAN: Gigabit LAN controller 10/100/1000
2nd LAN: Optional
COM: COM x3 (COM1, COM2 standard, COM3 with +5V/ +12V Power)
Input Power: DC Jack with Locking Connector
Cash Drawer: 1
Power Switch: 1
PS2: Optional

EXPANSION

Slot: PCIe for wireless LAN or 2nd Gigabit NIC Expansion

PERIPHERALS

MSR: Integrated ID Tech 3 Track MSR
Fingerprint Reader: Digital Persona (optional)
Internal Wireless/Bluetooth: a/b/g/n/ac (optional)
Multiple Base Options: Triangle, Desktop, Universal Printer Base

TECHNICAL SPECS

Specs: 12.75" x 9.75" x 2.25"
Power Adapter: 19V, 65W
IP Rating: IP54 Front Rating

OS SUPPORT

Windows 7 Pro, Pos Ready 7, Windows 10 IOT, Windows 10 Pro, Linux
64 Bit Support: Yes