

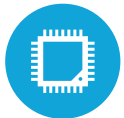


### HIGHLIGHTS

\*Shown with Ingenico Pin Pad



21.5" Projected Capacitive Touch Screen in Portrait Mode



Available in Windows and Android



Integrated Design with Built in Epson M30 Printer, Ships in One Box



Next Generation Kiosk Design



Peripheral Options Include MSR, Pin Pad Mount, Wireless, Scanner and Webcam

# SPECIFICATIONS

## PROCESSING

Intel® i3-7100U 2.4GHz Kabylake (Windows)

Intel® i5-6300U 3.0Ghz Skylake (Windows)

Qualcomm Snapdragon 450 up to 1.8Ghz (Android)

## MEMORY

1x DDR3-Lx1 up to 8 GB (Windows), 3GB (Android)

## STORAGE

Solid State Drive: 2.5" SSD 128GB up to 2TB (Windows), 32GB (Android)

## LCD & TOUCH

LCD Size: 21.5"

LCD Aspect Ratio: 16:9

LCD Native Resolution: 1920x1080 Pixels

LCD Brightness: 250 nits

Touch Panel: True Flat Projected Capacitive Touch

## EXPANSION

Mini PCI-e Slot: 1 (Windows), N/A (Android)

## I/O PORTS (STANDARD)

USB: 2x USB 2.0 4x USB 3.0 (Windows), 2xUSB 2.0, 2x USB 3.0 Micro USB for OTG

(Android) Serial: 4xRJ45 (with the power option) (Windows), 2x DB9 (Android)

LAN: 1x Gigabit Lan

VGA: D-SUB15 with power options (Windows), N/A (Android)

Cash Drawer: x1 Direct IO Access (Windows), N/A (Android)

## I/O PORTS (OPTIONAL)

2nd LAN: 1x Gigabit LAN (Windows), N/A (Android)

## OPTIONAL PERIPHERALS

MSR: IDTECH or Magtek Readers

Webcam: 2.0MP

Wifi & Bluetooth: Wireless A/B/G/N/AC, Bluetooth 5

2D Barcode Scanner: Honeywell 2D Scanner with optional Driver's License

Scanning Support

Integrated Printer: Epson TM-M30 (Interfaces include: USB, Serial, Ethernet, WIFI)

Podium Kiosk: Slim Printer Base

## OS SUPPORT

Windows 10 IOT Enterprise IOT 2019 LTSC, Windows 10 Professional,

Android 9

## DIMENSIONS

Screen & Podium Kiosk: 12 7/8" (W) x 26 3/4" (H) x 8 1/4" (D)

Podium Only: 16" (w) x 30 1/2" (H) x 14" (D) (Dimensions include bottom pate)

Weight of Screen and Kiosk: 30LBS



1	Slim, Sleek Design
2	Mounted on Slim Podium Kiosk
3	Portrait Mode
4	Space Saving Capabilities
5	Epson TM-M30 Printer
6	Optional Webcam
7	Optional Pin Pad Mount
8	Optional 2D Barcode Scanner