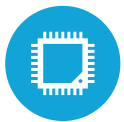




HIGHLIGHTS



Up to an Intel i7 Kaby Lake Processor



Up to 32GB RAM



Raid Support



Small Footprint



Multiple Port Options

SPECIFICATIONS

CPU PROCESSING

Intel Kaby Lake Series
 Intel® Celeron G3930TE Dual Core, 2.7Ghz
 Intel® Dual Core i3-7101TE, 3.4Ghz
 Intel® Dual Core i5-7500T, 2.7Ghz, up to 3.3Ghz
 Intel® Quad Core i7-7700T, 2.9Ghz, up to 3.8Ghz

Chipset: Intel Q170
 System Memory: 2xDDR4 2133Mhz Short Dimm (32GB Max)
 LAN: Intel LAN
 Graphics: Intel HD Graphics DX12

CONTROL INDICATOR

Power Indicator LED: 1 HDD
 Indicator LED: 1

STORAGE

2x2.5" Sata HDD or SSD
 RAID 1/0
 nVME SSD: Optional

POWER

Power Adapter: Built-in Mini-ITX power adapter, Autoswitching

REAR I/O PORTS

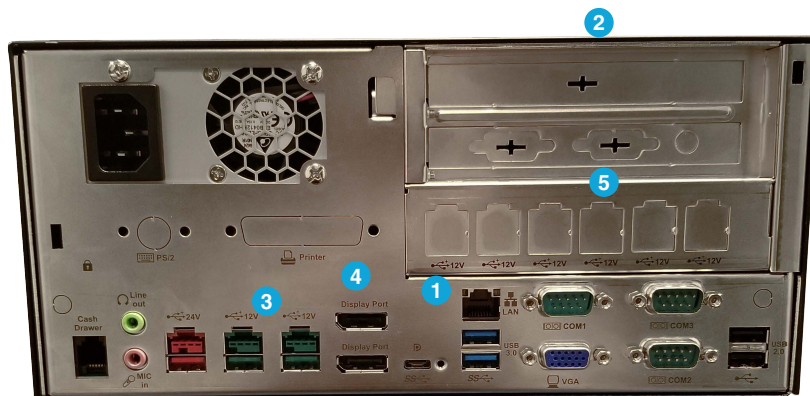
9 Total USB Ports:
 2x 3.0, 2x 2.0 (back)
 1x 3.0 (front)
 1x Type C
 2x Powered USB +12V
 1x Powered USB +24V
 Serial Ports: 3xDB9 with the power option
 LAN: 1x Gigabit LAN, RJ45
 VGA: 1
 Cash Drawer: 1x RJ11 (12/42 Cash Drawer Port)
 Display port: 2
 Audio Line-out: 1
 Audio Mic-in: 1

EXPANSION SLOTS

1x PCIe x1
 1x PCIe x16
 m.2: For Wireless

OPTIONAL PORTS

COM4/COM5/+12V out: 1
 Parallel Port: 1
 PS/2 Port: 1
 Powered USB Hub: 6x +12V (Different power adapter required)



KEY FEATURES

1	Rich I/O Port Selection
2	RAID Support with Hot Swap (Behind front panel)
3	9 USB Ports (Including Powered USB)
4	Display Port, VGA, HDMI and DVI Support
5	Powered USB Hub Support

ENVIRONMENT

Operating Temperature: 41°F ~ 105°C
 Operating Humidity: 20% ~ 80% RH non condensing
 Storage Temperature: 4°F ~ 140°F
 Storage Humidity: 20% ~ 85% RH non condensing

OS SUPPORT

Linux, Windows 10 IOT, Windows 10 Professional

SPECIFICATIONS

Dimensions: 10.4" x 11.8" x 5.2"
 Weight: 14.3 LBS