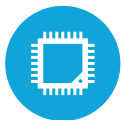




HIGHLIGHTS



2 CPU Options Available (up to i3)



Multiple Ports and Optional Peripherals



Foldable Stand for Ergonomic Small Footprint



Fanless and Ventless Design



14" Widescreen HD LED LCD with an IP54 Rating for Busy Medical Facilities

SPECIFICATIONS

MOTHERBOARD

Processors:

Intel® Celeron® Quad Core Processor J1900 2.0 (Black and White)

Intell® Core® i3-6100U 2.42GHz Skylake (Black only)

System Memory: 1xDDR3L SoDIMM up to 8GB

DISPLAY

LCD Size: 14" Widescreen LCD

Resolution: 1366 x 768 LCD

Brightness: 230 cd/m2

LCD Backlight Type: LED LCD

Aspect Ratio: 16:9

IP Rating: IP54

Touch Glass: Projected Capacitive

STORAGE

Solid State Drive: Standard 128 GB SSD

Optional 256 GB SSD

EXTERNAL I/O PORTS

Serial Port: 3 RJ45-RS232 ports

USB Port: 5x USB 2.0, 1x USB 3.0-J1900

USB Port: 2x USB 2.0, 4x USB 3.0- i3-6100u

Cash Drawer Port: 1

DC Jack: Lock-in 4PIN, 19V

Gigabit LAN Port: 1

VGA Port: 1

PS/2: 1- J1900 (Optional) (N/A on i3) Audio

Out: 1 (Optional)

EXPANSION

MiniPCI-e Slot: 1 (for wireless LAN)

OPTIONAL PERIPHERALS

MSR: Integrated USB MSR (encrypted option available)

Barcode Scanner: Integrated 2D Barcode Scanner (programmable)

Customer Display: Integrated Customer Display 2x20 (LCM), 8", 14", and 15" LCD

Printer Base: Compatible with Universal Printer Base (T25 and Epson T70II printers) and the Slim Printer Base (Epson TM-M30 printer)

Fingerprint Reader: compatible with URU4500 and Steelcoat Readers

Wireless LAN: Wireless a/b/g/n

TECHNICAL SPECS

Dimensions: 15"(W) x 7" (H) x 11"(D) with base unfolded

Weight: 3.94kg (8.7lbs) with PSU

Mounting Option: 75mm x 75mm VESA

OS SUPPORT

POS Ready 7, Windows 8.1 Embedded Industry Retail Pro,

Win 10 IOT & Pro, Linux

64-bit Support: YesS



KEY:

1	14.1 Widescreen LED Projected Capacitive Display
2	Available in White
3	Fold Flat Base
4	IP54 Rated Screen
5	External I/O Ports (15 total)
6	Optional MSR