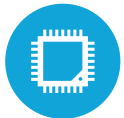




HIGHLIGHTS



Projected Capacitive Touch Screen



3 CPU Options Available



Up to 16GB RAM



Rackable Motherboard



Fanless Design

SPECIFICATIONS

PROCESSING

Intel® Celeron® 3955U Dualcore 2.0Ghz
 Intel® Core® i3- i3-6100U 2.42Ghz Skylake
 Intel® Core® i5-6100U 2.4 Ghz Skylake
 Memory: 2xDDR3L SoDIMM up to 16GB
 Intel HD Graphics: Intel® HD Graphics 510 (3955u)
 Intel® HD Graphics 520 (i3 & i5)

LCD PANEL

LCD Size: 15" & 17"
 LCD Type: LED LCD
 Brightness: 300 nits
 Aspect Ratio: 4:3
 Touch Screen Type: Projected Capacitive
 Screen: Bezel-less True Flat

STORAGE

Solid State Drive: Standard 128GB SSD
 Optional 256 GB SSD & 512 GB SSD

POWER ADAPTER

Integrated 90W 19V 3.4A DIN Connector

DIMENSIONS

15" with base; 15.7" H x 11.8" W x 9.2" D (with MSR)
 Weight on Standard base: 11 LBS
 17" with base; 17.3" H x 14.1" x 10.4" D (with MSR)
 Weight on Standard base: 19LBS

I/O PORTS (STANDARD)

USB: 2 x (USB 2.0) 4 x (USB 3.0)
 Serial: 2 x RJ45 (COM 1 & 2, 3, 4 powered optional 5V/12V)
 Powered USB: Optional 1x +12V and 1x +24V
 Cash Drawer Port: 1x (+12V/+24V)
 2nd VGA: 1 x D-Sub15 (Power Option Available)
 3rd VGA: 1x Display Port

OPTIONAL PERIPHERALS

MSR USB: Encrypted Option Available Fingerprint
 Reader: Digital Persona (USB Interface)
 Rear LCD: 8" x 15" (Touch Optional)
 Customer Display: 2 x 20 VFD Display
 Wireless LAN: 802.11 a/b/g/n/ac
 Scanner: 2D Barcode Scanner
 Stereo Speakers
 Pin Pad Mount

OS SUPPORT

POS Ready 7, Windows 8.1 Industry Retail Pro, Windows 10 IoT
 Windows 10 Pro, Linux (*All options are 64 Bit Only)



KEY FEATURES

1	15" Projected Capacitive Touch Screen
2	USB MSR and other optional peripherals available
3	Multiple Base options
4	Rackable Motherboard