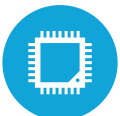




HIGHLIGHTS



Android® 9 Operating System



10.1" Projected Capacitive Touch Screen



Standard features including WiFi, Bluetooth and Speakers



Designed Specifically for the Gaming Community



Optional Charging Rack with Slide in Charging

SPECIFICATIONS

MOTHERBOARD

Processor: Qualcomm® MSM8953 Snapdragon 450 1.8Ghz
System Memory: 3GB LPDDR3

DISPLAY

LCD Size: 10.1" IPS LCD with the LED Bar
LCD Resolution: 1920 X 1200
Brightness: 380 nits
Aspect Ratio: 16:10
Touch Screen : P-CAP 5 point multi touch

STORAGE

Storage: 32GB eMMC

POWER

Battery: 2 x 7000mAh, 3.85V
Battery Life: Up to 12+ Hours
Charging Rack and Direct DC
Optional 36W PSU for Charging only

CONTROLS & INDICATORS

Power Button: x1
Sensors: G-Sensor and Ambient Light Sensor
LED Indicator: 2 (x1 in the handle and x1 on the front glass)
Multicolor LED Bar

EXTERNAL/IO PORTS

USB: x1 USB C 3.0 (Data only)
Audio Jack & Mic: 1 port without cover
DC Charging Indicator: 1 DC Connector
POGO Connector: For Charging Station

CONNECTIVITY:

Wireless: 802.11 b/g/n/ac with 2.4Ghz/5Ghz Support
Bluetooth: 4.0+LE (Class2)
Speaker: x2 1W with the chamber in handle

ENVIRONMENT:

Operating Temperature: 32°F ~ 104°F
Storage Temperature: 14°F ~ 114°F
Operating Humidity: 20% ~ 80% RH non-condensing
Storage Humidity: 20% ~ 80% RH non-condensing

CERTIFICATE:

EMC & Safety: FCC Class B, CE Mark, UL/cUL

DIMENSIONS:

Dimensions: 13.05" x 7.70" x 1.59"
Weight: 3.08 LBS

OPERATING SYSTEM:

Android 9



KEY

| | |
|---|---|
| 1 | 10.1" Projected Capacitive Touch Screen |
| 2 | Speakers Built Into the Handle |
| 3 | Screen Lights up Around Bezel |
| 4 | Smooth Handle for Support |
| 5 | USB-C on Top of the Tablet |
| 6 | Potential for Private Labeling/Logo |
| 7 | Kick Stand |
| 8 | Up to 12+ Hours Battery Life |