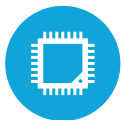




HIGHLIGHTS



Intel® Atom® Cherry Trail Processor



7" or 10" Projected Capacitive Touch Screen



Ruggedized design confirming to IP54 rating and 4 ft. drop specification



Standard features including WiFi, Bluetooth, and MSR (encrypted optional)



Level 3 Certified EMV

SPECIFICATIONS

MOTHERBOARD

Processor: Intel® Atom® X7-8750 1.6 Ghz with the burst freq. @ 2.56Ghz
 Chipset: SOC
 System Memory: 4GB DDR3L (up to 8GB DDR3L available)
 Cache: 2MB

DISPLAY

LCD Size: 7" or 10.1"
 Maximum Resolution: 1280 x 800 (Quest 7"), 1920 x 1200 (Quest 10")
 LCD Backlight Type: LED
 Brightness: 300 nits(Quest 7"), 370 nits(Quest 10")
 Aspect Ratio: 16:10

STORAGE

Storage: 64GB eMMC

POWER

Battery: 8000mAh, 3.7V

OPTIONAL PERIPHERALS

Smart Chip Reader: EMV L3 Certified
 Barcode Scanner: Integrated 2D Barcode Scanner with USB interface
 Fingerprint Reader: Capacitive fingerprint reader
 Cellular Data: 3G SIM Card Slot
 Battery Charger: 5-bay battery charger
 Camera: 8MP with autofocus
 NFC: Near Field Communication
 Age/ID Verification: Easy DL @2.0 Scanning
 Augusta Reader: Level 3 Certified (10" Only)

DOCKING OPTIONS:

Charging Dock: Standard Dock, comes with USB OTG Cable
 Premium Dock: Comes with 4 x USB, 1 x Serial, 1 x LAN with optional VGA port

CONNECTIVITY:

Wireless: 802.11 b/g/n/ac with 2.4Ghz/5Ghz Support
 Bluetooth: 4.0+LE (Class2)
 3G: Optional

ENVIRONMENT:

Operating Temperature: 0°C ~ 40°C (32°F ~ 104°F)
 Storage Temperature: -10°C ~ 45°C (-45°F ~ 114°F)
 Operating Humidity: 20% ~ 80% RH non-condensing
 Storage Humidity: 20% ~ 80% RH non-condensing

CERTIFICATE:

EMC & Safety: FCC Class B, CE, UL
 Dust & Water Proof: IP54 Rating, Full Tablet, No Accessories

DIMENSIONS:

Dimensions: 8" x 5" x 1.3" (Quest 7"), 10.6" x 6.9" x 1.4" (Quest 10")
 Weight: 1.47 Lbs. (Quest 7"), 2.08 Lbs. (Quest 10")

OPERATING SYSTEM:

Windows 10 IOT 64bit, Windows 10 Pro 64bit



KEY	
1	7" and 10" Projected Capacitive Touch Screen
2	Standard Dock and Optional Premium Dock
3	Standard MSR (Encryption Optional)
4	Standard Hand Strap
5	Optional EMV Slot
6	Optional Fingerprint Reader
7	Optional Barcode Reader
8	Optional 3G Module