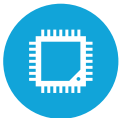




HIGHLIGHTS



Projected Capacitive Touch Screen



3 CPU Options Available (up to i5)



Up to 8GB RAM



Slim and Sleek Finish



Multiple Peripheral Options

SPECIFICATIONS

PROCESSING

CPU: Intel® Celeron Quad Core J3455 1.5GHz (up to 2.3GHz), i3-6100U 2.3GHz Skylake, i5-6300U up to 3.0 GHz Skylake
 System Memory: 1x DDR3-LV SODIMM 4GB (up to 8GB Optional)
 Graphics Memory: Intel HD Graphics, 500

LCD PANEL

LCD Size: 15" & 17"
 LCD Backlight type: LED
 Brightness: 350 nits
 Maximum Resolution: 1024 x 768
 Touch Screen Type: Projected Capacitive (USB Interface)
 IP Rating: IP65
 Screen: Bezel-less True Flat

STORAGE

Solid State Drive: Standard 128 GB SSD
 Optional 256 GB SSD

POWER

Power Supply: 65W +19V power adapter (J3455 only) 90W
 Power Adapter (i3 and i5)
 EMC & Safety: FCC / CE Class A, LVD
 Operating Temperature: 5°C ~ 35°C (41°F ~ 95°F)

DIMENSIONS

15" with base; 13" H x 14 7/8" W x 9" D (with MSR);
 Peripheral Variation (Width only): 15 5/8" (with fingerprint);
 16" (with MSR and Fingerprint)

EXPANSION

M.2 Slot: 1 Optional

I/O PORTS

USB: 2 (USB 2.0) 4 (USB 3.0)
 Serial: 3 x RJ45 with DB9 Adapters (COM3, 4 powered with 5V/12V, by BIOS)
 Gigabit LAN (10/100/1000): 1
 Cash Drawer Port: 1 RJ11 (12V / 24V)
 DC Jack: 1
 Power Button: 1
 PS/2: N/A
 Audio Out: 1 Set (Optional)
 Display Port: 1 (Optional)

OPTIONAL PERIPHERALS

MSR USB: Encrypted Option Available
 Fingerprint Reader: Steel Coat Crossmatch (USB interface)
 Rear LCD: 8.4" x 15" (Touch Optional)
 Customer Display: 2 x 20 VFD Display
 Wireless LAN: 802.11 b/g/n/ac
 Scanner: 2D Barcode Scanner
 Pin Pad Mount



KEY FEATURES

1	15 LED LCD Projected Capacitive Display
2	Optional Rear Customer Display (sizes available)
3	External I/O Ports (15 total)
4	Optional Integrated Fingerprint Reader
5	Optional MSR

OS SUPPORT

J3455: Windows 10 (64 bit) Pro & IOT
 i3 & i5: POSREADY 7 (64 bit), 8.1 Embedded Industry Retail Pro (64 bit), Windows 10 IOT & Pro (64 bit)