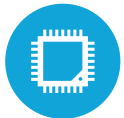




### HIGHLIGHTS



Projected Capacitive Touch Screen



3 CPU Options Available



Up to 16GB RAM



Rackable Motherboard



Fanless Design

# SPECIFICATIONS

## PROCESSING

Intel® Celeron® 3955U Dualcore 2.0Ghz  
 Intel® Core® i3- i3-6100U 2.42Ghz Skylake  
 Intel® Core® i5-6100U 2.4 Ghz Skylake  
 Memory: 2xDDR3L SoDIMM up to 16GB  
 Intel HD Graphics: Intel® HD Graphics 510 (3955u)  
 Intel® HD Graphics 520 (i3 & i5)

## LCD PANEL

LCD Size: 15"  
 LCD Type: LED LCD  
 Brightness: 300 nits  
 Aspect Ratio:4:3  
 Touch Screen Type: Projected Capacitive  
 Screen: Bezel-less True Flat

## STORAGE

Solid State Drive: Standard 128GB SSD  
 Optional 256 GB SSD & 512 GB SSD

## POWER ADAPTER

Integrated 90W 19V 3.4A DIN Connector

## DIMENSIONS

15" with base; 15 1/2" H x 9 1/2" W x 9 1/2" D (with MSR)  
 Weight on Standard base: 7.5 LBS

## I/O PORTS (STANDARD)

USB: 2 x(USB 2.0) 4 x(USB 3.0)  
 Serial: 2xRJ45 (COM 1 & 3, 4 powered optional 5V/12V)  
 Powered USB: Optional 1x +12V and 1x +24V  
 Cash Drawer Port: 1x(+12V/+24V)  
 2nd VGA: 1 x D-Sub15 (Power Option Available)  
 3rd VGA: 1x Display Port

## OPTIONAL PERIPHERALS

MSR USB: Encrypted Option Available Fingerprint Reader: Digital Persona (USB Interface)  
 Rear LCD: 8" x 15" (Touch Optional)  
 Customer Display: 2 x 20 VFD Display  
 Wireless LAN: 802.11 a/b/g/n/ac  
 Scanner: 2D Barcode Scanner  
 Stereo Speakers  
 Pin Pad Mount

## OS SUPPORT

POS Ready 7, Windows 8.1 Industry Retail Pro, Windows 10 IOT  
 Windows 10 Pro, Linux (\*All options are 64 Bit Only)



KEY FEATURES	
1	15" Projected Capacitive Touch Screen
2	USB MSR and other optional peripherals available
3	Multiple Base options
4	Rackable Motherboard