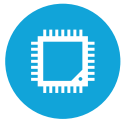




HIGHLIGHTS



Projected Capacitive Touch Screen



4 CPU Options Available (up to Intel i7)



Up to 16GB RAM



Rackable Motherboard



Multiple Peripheral Options

SPECIFICATIONS

PROCESSING

Intel Core i3-7101TE Dualcore 3.4Ghz
Intel Core i5-7500T Quadcore 2.7Ghz, up to 3.3Ghz
Intel Core i7-7700T Quadcore 2.9Ghz, up to 3.8Ghz
Memory: 2X DDR3L up to 16GB
Graphics : Intel HD Graphics

LCD PANEL

LCD Size: 15"
Maximum Resolution: 1024 x 768
Brightness: 350 nits
LCD Backlight: LED
Aspect Ratio: 4:3
Touch Screen Type: Projected Capacitive
Tilt Angle: 0° ~ 140°
Screen: Bezel-less True Flat

STORAGE

Solid State Drive: Standard 128GB SSD (with Raid, Optional)
Optional 256 GB SSD

POWER SUPPLY

120W +19V or 180W with powered USB or Printer Power Ports

EXPANSION

M.2 Slot: 1 Optional

I/O PORTS STANDARD

USB: 2 x(USB 2.0) 4 x(USB 3.0)
Serial: 3xRJ45 with DB9 Adapters (COM3, 4 powered with 5V/12V, via BIOS)
LAN: Gigabit LAN (10/100/1000)
VGA: D-SUB 15 with power options via BIOS
Display Port: 1
Audio Out: 1

I/O PORTS (OPTIONAL)

1: 2xUSB 2.0, RJ45 Gigabit LAN
2: 1x Power USB +24V, 1x Power USB +12V, 1x Cash Drawer
3: 1x +24V Printer power port, 1x Power USB +12V, 1x Cash Drawer

OPTIONAL PERIPHERALS

MSR USB: Encrypted Option Available
Fingerprint Reader: Steelcoat Crossmatch (USB interface)
Rear LCD: 8" & 15" (Touch Optional)
Customer Display: 2 x 20 VFD Display
Wireless LAN: 802.11 b/g/n/ac
Scanner: 2D Barcode Scanner
Pin Pad Mount

TECHNICAL SPECS

15" with base; 14.1" 12.2"(H) x 12.2" (W) x 8.4" (D)
Peripheral Variation with Fingerprint & MSR: 15.9" (H) x 12.2" (W) x 8.4" (D)
Weight on Standard base: 14.5 LBS

OS SUPPORT

Windows 10 IOT & Pro (64 bit)



KEY FEATURES

1	15" Projected Capacitive Touch Screen
2	Rackable motherboard from the top of unit
3	Optional MSR
4	Optional Steelcoat Fingerprint Reader