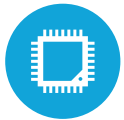




## HIGHLIGHTS



Projected Capacitive Touch Screen



3 CPU Options Available (up to i5)



Up to 8GB RAM



Slim and Sleek Finish



Available in 15" or 17" Display

# SPECIFICATIONS

## PROCESSING

CPU: Intel® Celeron Quad Core J3455 1.5GHz (up to 2.3GHz), i3-6100U 2.3GHz Skylake, i5-6300U up to 3.0 GHz Skylake  
 System Memory: 1x DDR3-LV SODIMM 4GB (up to 8GB Optional )  
 Graphics Memory: Intel HD Graphics, 500

## LCD PANEL

LCD Size: 15" & 17"  
 LCD Backlight type: LED  
 Brightness: 350 nits  
 Maximum Resolution: 1024 x 768 (15") 1280 x 1024 (17")  
 Touch Screen Type: Projected Capacitive (USB Interface)  
 IP Rating: IP65  
 Screen: Bezel-less True Flat

## STORAGE

Solid State Drive: Standard 128 GB SSD  
 Optional 256 GB SSD

## POWER

Power Supply: 65W +19V power adapter (J3455 only) 90W  
 Power Adapter (i3 and i5)  
 EMC & Safety: FCC / CE Class A, LVD  
 Operating Temperature: 5°C ~ 35°C (41°F ~ 95°F)

## DIMENSIONS

15" with base; 13" H x 14 7/8" W x 9" D (with MSR);  
 Peripheral Variation (Width only): 15 5/8" (with fingerprint);  
 16" (with MSR and Fingerprint)

## EXPANSION

M.2 Slot: 1 Optional

## I/O PORTS

USB: 2 (USB 2.0) 4 (USB 3.0)  
 Serial: 3 x RJ45 with DB9 Adapters (COM3, 4 powered with 5V/12V, by BIOS)  
 Gigabit LAN (10/100/1000): 1  
 Cash Drawer Port: 1 RJ11 (12V / 24V)  
 DC Jack: 1  
 Power Button: 1  
 PS/2: N/A  
 Audio Out: 1 Set (Optional)  
 Display Port: 1 (Optional)

## OPTIONAL PERIPHERALS

MSR USB: Encrypted Option Available  
 Fingerprint Reader: Steel Coat Crossmatch (USB interface)  
 Rear LCD: 8.4" x 15" (Touch Optional)  
 Customer Display: 2 x 20 VFD Display  
 Wireless LAN: 802.11 b/g/n/ac  
 Scanner: 2D Barcode Scanner  
 Pin Pad Mount



## KEY FEATURES

1	15 LED LCD Projected Capacitive Display
2	Optional Rear Customer Display (sizes available)
3	External I/O Ports (15 total)
4	Optional Integrated Fingerprint Reader
5	Optional MSR

## OS SUPPORT

J3455: Windows 10 (64 bit) Pro & IOT  
 i3 & i5: POSREADY 7 (64 bit), 8.1 Embedded Industry Retail Pro (64 bit), Windows 10 IOT & Pro (64 bit)