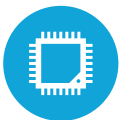




HIGHLIGHTS



2 CPU Options Available



Fanless and Ventless



Multiple Port Options



Small Form Factor



Low Power Consumption

SPECIFICATIONS

MOTHERBOARD

Processors: Intel® Celeron® Quad Core J1900 up to 2.42 Ghz
Intel® Skylake® i3-6100U 2.3Ghz
System Memory: 1x 4 Gig DDR3L, up to 8 Gig
Graphic Memory: Intel HD Graphics DX11
Cache: 2MB
Cooling Type: Fanless
Vent Holes: No, Sealed Design
64 Bit Support: 64 bit OS Support

STORAGE

Hard Drive: 2.5" SATA HDD
Or
Solid State Drive: SATA SSD (Optional)

EXPANSION

Mini-PCI express slot: 1 (for wireless LAN or 2nd LAN)

REAR I/O PORTS

USB: 4 x USB 2.0, 1 x USB 3.0
Serial Ports: 3 x RJ45 RS-232 (power option via jumper)
Parallel Port: Parallel 1
Display Port: 1
Network: Gigabit LAN (Optional Second Gigabit LAN)
Audio Out: 1 (Optional)
2nd VGA: 1 (Requires Optional Display Port to VGA Adapter)
Cash Drawer Port: 1
DC Jack: Lock-in 4 PIN, 19V
Wireless Antenna: 1 (Optional)

TECHNICAL SPECS

Dimensions: (8.7" x 5.4" x 1.4") 222 x 138 x 36.8mm
Weight: 2.6 LBS (1.2 Kg)
Mounting Options: 100mm x 100mm VESA or flexible mounting support

OS SUPPORTED

POS Ready 7, Windows 8.1 Embedded Industry Retail (64 bit),
Windows 10 IOT (64 bit), Windows 10 Pro (64 bit)



KEY FEATURES

| | |
|---|----------------------|
| 1 | Small Form Factor |
| 2 | 5 USB Ports |
| 3 | 3 Serial Ports |
| 4 | Fanless and Ventless |