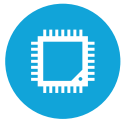




HIGHLIGHTS



Projected Capacitive Touch Screen



3 CPU Options Available



Up to 16GB RAM



Rackable Motherboard



Fanless Design

SPECIFICATIONS

PROCESSING

Intel® Celeron® 3955U Dualcore 2.0Ghz

Intel® Core® i3- i3-6100U 2.42Ghz Skylake

Intel® Core® i5-6100U 2.4 Ghz Skylake

Memory: 2xDDR3L SoDIMM up to 16GB

Intel HD Graphics: Intel® HD Graphics 510 (3955u)

Intel® HD Graphics 520 (i3 & i5)

LCD PANEL

LCD Size: 15"

LCD Type: LED LCD

Brightness: 300 nits

Aspect Ratio:4:3

Touch Screen Type: Projected Capacitive

Screen: Bezel-less True Flat

STORAGE

Solid State Drive: Standard 128GB SSD

Optional 256 GB SSD & 512 GB SSD

POWER ADAPTER

Integrated 90W 19V 3.4A DIN Connector

DIMENSIONS

15" with base; 13.6" H x 16.9" W x 9.9" D (with MSR)

Weight on Standard base: 17 LBS

EXPANSION

Mini-PCI Express Slot: 1

I/O PORTS (STANDARD)

USB: 2 x(USB 2.1) 4 x(USB 3.0)

Serial: 4xRJ45 (COM 2, 3, 4 powered option +5V/+12V)

Powered USB: Optional 1x +12V and 1x +24V

Cash Drawer Port: 1x(+12V/+24V)

2nd VGA: 1 x D-Sub15 (Power Option Available)

3rd VGA: 1x Display Port

OPTIONAL PERIPHERALS

MSR USB: Encrypted Option Available

Fingerprint Reader: Digital Persona (USB Interface)

Rear LCD: 8" x 15" (Touch Optional)

Customer Display: 2 x 20 VFD Display

Wireless LAN: 802.11 a/b/g/n/ac

Scanner: 2D Barcode Scanner

Stereo Speakers

Pin Pad Mount

OS SUPPORT

POS Ready 7, Windows 8.1 Industry Retail Pro, Windows 10IOT

Windows 10 Pro, Linux (*All options are 64 Bit Only)



KEY FEATURES

1	15" Projected Capacitive Touch Screen
2	USB MSR and other optional peripherals available
3	Multitple Base options
4	Rackable Motherboard