



Pavilion Kiosk

COFFEE WE TRUST



Application Benefits

- Multiple Configurations Available
- Payment Methods Integrated
- Enhance Customers' Experience
- Minimum Wobble Guaranteed
- Easy Serviceability and Upgradability
- Kiosk Solution for Contactless Payments



2.32 Inches

System Thickness

0.7 Inches

Touch Bezel Width

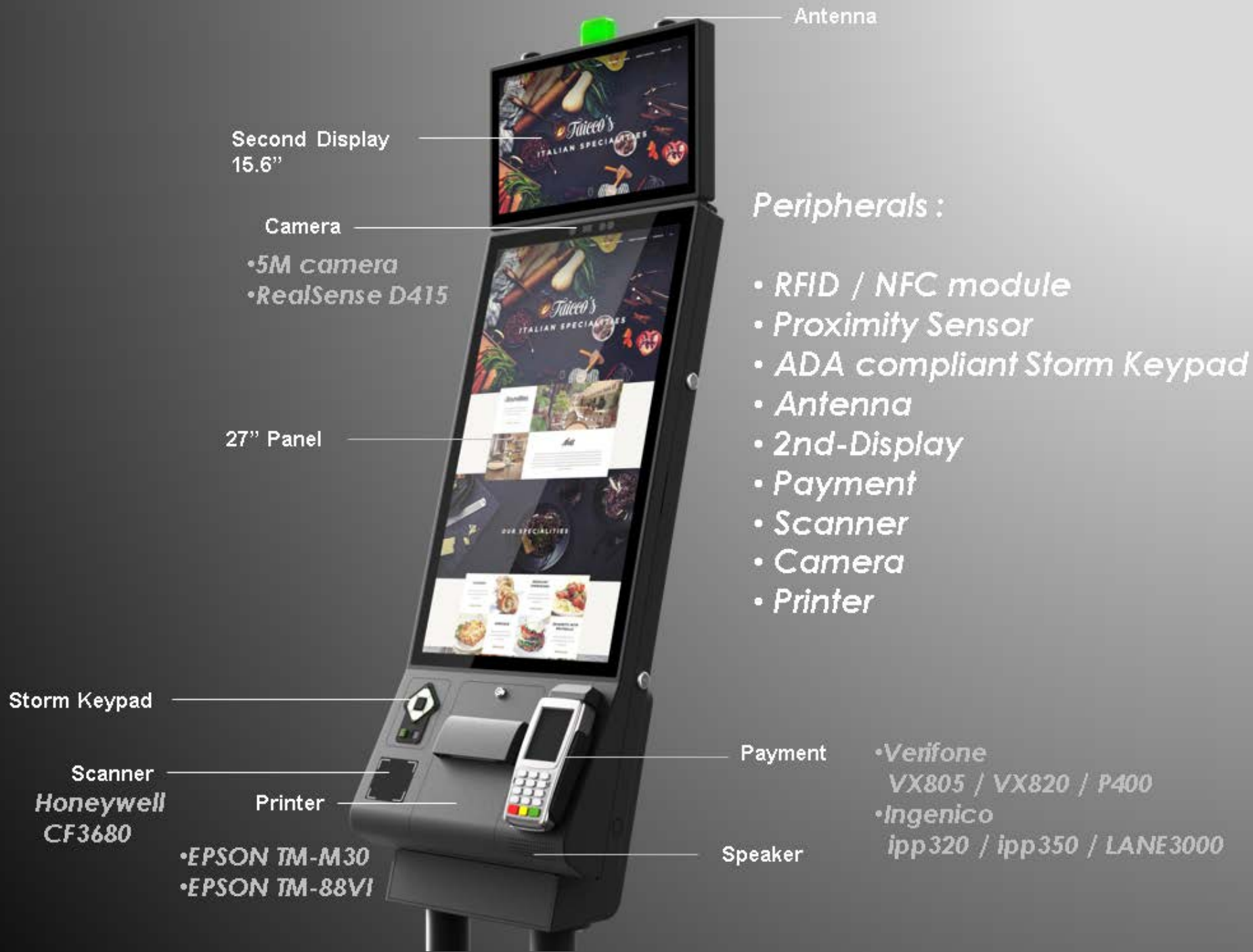


Self-Service
KIOSK 27"

30°

15°

0°



Antenna

Second Display
15.6"

Camera

- 5M camera
- RealSense D415

27" Panel

Storm Keypad

Scanner
Honeywell
CF3680

Printer

- EPSON TM-M30
- EPSON TM-88VI

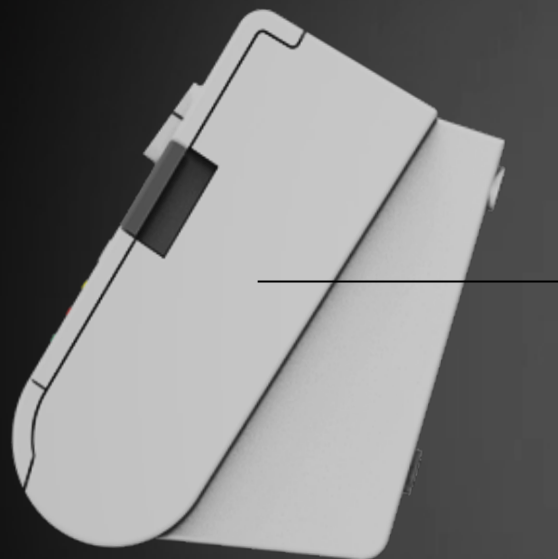
Payment

- Verifone
VX805 / VX820 / P400
- Ingenico
ipp320 / ipp350 / LANE3000

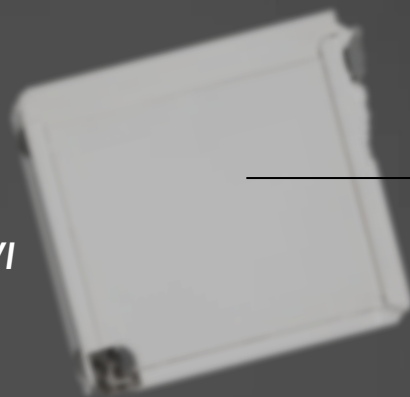
Speaker

Peripherals :

- RFID / NFC module
- Proximity Sensor
- ADA compliant Storm Keypad
- Antenna
- 2nd-Display
- Payment
- Scanner
- Camera
- Printer



*EPSON
TM-88VI*



*EPSON
TM-M30*

Printer Solution

- *EPSON_TM-88VI*
- *EPSON_TM-M30*

Dummy
Cover

RFID

Storm Keypad

- Storm Keypad
- RFID
- Dummy Solution

Payment Solution

- VERIFONE : VX820
- INGENICO : IPP350
- VERIFONE : P400

- VERIFONE : VX805
- INGENICO : IPP320
- INGENICO : LANE-3000



VERIFONE
VX820



INGENICO
IPP350



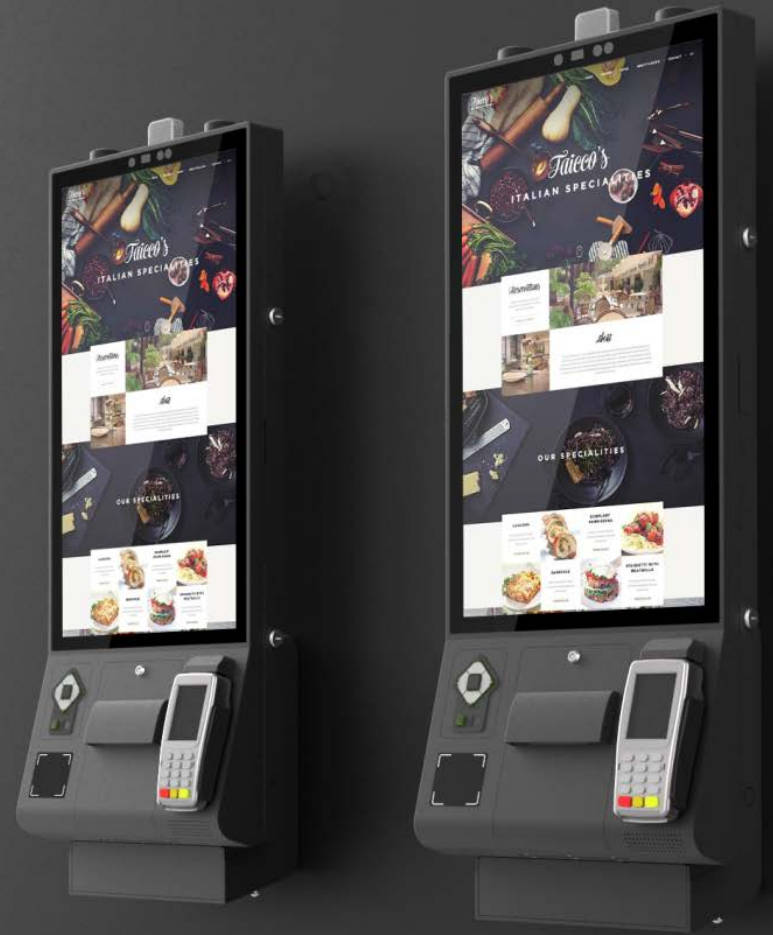
VERIFONE
P400

Second Display Solution

Second Display
15.6"



Wall Mount Solution



Counter Mount Solution



Counter Plate



Stand

Plate

Stand & Plate Solution

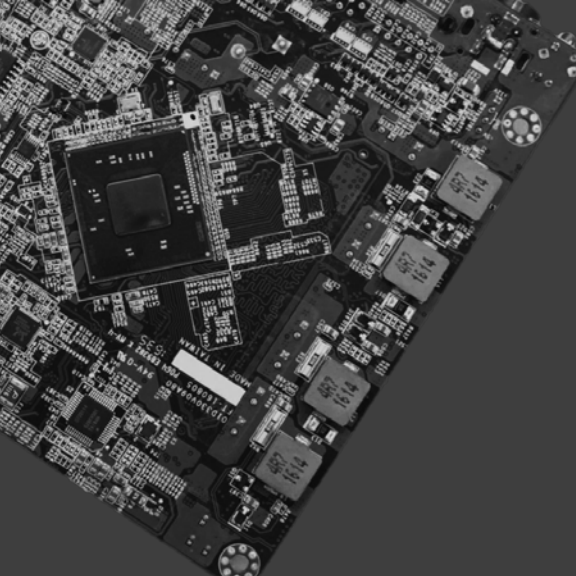
Color Plan

*Option
(White Color)*



**Standard
(Black Color)**





<i>System</i>	<i>Motherboard Processor Memory Storage</i>	<i>Intel Whiskey Lake Intel Whiskey Lake U i3 8145UE 2.2GHz 1x DDR4 2133MHz SO-DIMM up to 32GB 2x M.2 (M-key) NVMe or M.2 SATA SSD module</i>
<i>LCD Touch Panel</i>	<i>LCD Size Brightness Resolution Touch Screen Aspect Ration</i>	<i>27" 300 nits 1920 x 1080 (Full HD) True-Flat PCAP Multi-Touch 9:16</i>
<i>Expansion</i>	<i>M. 2 (E-key)</i>	<i>1x M.2 (E-key) WiFi/BT module (option)</i>
<i>External I/O Ports</i>	<i>USB Serial Port LAN Cash Drawer FeDP DC Jack</i>	<i>2x USB3.0 Type C, 2x USB3.0, 2x USB2.0 2x DB9 (Powered RS232) (default 0V; COM1 5V, COM2 12V) 1x RJ45 1x RJ11 2 (Proprietary) 1 4PIN DIN (with latch)</i>
<i>Audio</i>	<i>Speaker</i>	<i>1x 2W</i>
<i>Power</i>	<i>Power Adapter</i>	<i>65W / 19V</i>
<i>Communication</i>	<i>Wireless LAN</i>	<i>802.11 b/g/n/ac & BT4.0 WLAN Card (Option)</i>
<i>Certificate</i>	<i>EMC & Safety</i>	<i>FCC Class A, CE Mark, LVD</i>
<i>Environment</i>	<i>Operating Temperature Storage Temperature Humidity</i>	<i>0°C ~ 35°C (32°F ~ 95°F) -20°C ~ 60°C (14°F ~ 140°F) 20% ~ 90% RH non-condensing</i>
<i>Mounting</i>		<i>Counter, Wall Mount & Free Standing</i>
<i>Weight/ Dims</i>	<i>No Pole Mount Pole Mount Pole Mount Base</i>	<i>35.2 LBS 34.75" H x 15.25" W X 6"D 22 LBS 66.25" H X 15.25"W X 6"D 35.2 LBS 23.5" W x 23.5" D</i>
<i>OS Supported</i>		<i>Windows 10 IoT Enterprise & Professional (64bit), Linux</i>