



HIGHLIGHTS



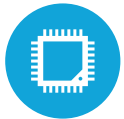
18.5" Projected Capacitive LED LCD



Rackable Motherboard



Up to 16GB RAM



Skylake CPU up to i5



Peripheral Options (MSR, fingerprint reader and pin pad mounts)

SPECIFICATIONS

MOTHERBOARD

CPU & CPU Score:

Core™i5-6300u up to 3.0Ghz

Core™i3-6100u 2.3Ghz

Intel™ Celeron™ 3955U 2.0Ghz

Chipset: Intel™ Skylake-U

System Memory: Dual Channel, So-DIMM x2 up to 16GB DDR3L

Graphics: Intel™ HD Graphics 520 (i3-6100u & i5-6300u)

Intel™ HD Graphics 510 (Celeron 3955u)

LCD DISPLAY

LCD: 18.5"

Maximum Resolution: 1920x1080

Brightness: 300 nits

Backlight Technology: LED

Aspect Ratio: 16:9

Touch: True Flat Projected Capacitive Touch

STORAGE

Solid State Drive: 128 GB SSD

Optional 256 GB SSD

EXPANSION

Mini-PCI Express Slot: 1

EXTERNAL I/O PORTS

USB: 6 (2 x USB 2.0, 4 x USB 3.0)

Serial Ports: 4 x RJ45 (COM 2, 3, 4 power option +5/+12V)

Network: 2 x Gigabit LAN ports

Audio: 3.5mm jack line-out and 3.5 jack line-in (MIC-option)

Powered USB: Optional 1 x +12V and 1 x +24V

Cash Drawer Port: 1 x (+12V/+24V)

2nd VGA: 1 x D-sub15 (power option available)

3rd VGA: 1 x Display port

POWER

Power Adapter: Integrated 90W +19V 4.74A DIN Connector

OPTIONAL PERIPHERALS

MSR: ID Tech 3-Track MSR (USB or PS2) Encrypted Magtek USB MSR

Fingerprint Reader: URU 4500 Digital Persona

Customer Display: 2x20 VFD; 8", 15": 2nd Display, optional touch

Barcode Reader: Integrated 2D Barcode Reader

Wireless LAN: Mini PCI-E WLAN card, Intel, 1 x 1 IEEE 802.11 a/b/g/n/ac

Speaker: 2 x 2W

Pin Pad Mounts

CERTIFICATE

EMC & Safety: FCC Class A, CE, LVD

ENVIRONMENT

Operating & Storage Temperature: 0°C ~ 35°C (32°F ~ +95°F),
-20°C ~ 60°C (-40°F ~ 140°F)

Operating & Storage Humidity: 20% ~ 85% RH non-condensing

Weight: 17lbs

Dimensions (with base & MSR): 18.1/8" x 13" x 9"

Dimensions (with bracket and pin pad): 21.25" x 13" x 9"



KEY FEATURES

1	18.5" LED LCD with Projected Capacitive Touch
2	Fingerprint Reader
3	MSR
4	Ingenico Pin Pad
5	Universal Printer Base
6	Mounted Barcode Scanner

OS SUPPORT

POS Ready 7, Windows 8.1 Industry Retail Pro, Windows 10 IOT,
Windows 10 Pro, Linux (*All OS options are 64-bit only)