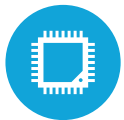




## HIGHLIGHTS



21.5" Projected Capacitive Touch Screen



Available in Windows and Android



Next Generation Design



Sealed Bezel on Android Version

# SPECIFICATIONS

## PROCESSING

Intel® i3-7100U 2.4GHz Kabylake (Windows)  
Intel® i5-6300U 3.0Ghz Skylake (Windows)  
Qualcomm Snapdragon 450 up to 1.8Ghz (Android)

## MEMORY

1x DDR3-Lx1 up to 8 GB (Windows), 3GB (Android)

## STORAGE

Solid State Drive: 2.5" SSD 128GB up to 2TB (Windows), 32GB (Android)

## LCD & TOUCH

LCD Size: 21.5"  
LCD Aspect Ratio: 16:9  
LCD Native Resolution: 1080x1920 Pixels  
LCD Brightness: 250 nits  
Touch Panel: True Flat Projected Capacitive Touch  
Qualcomm Snapdragon (Android): Sealed Bezel Design

## EXPANSION

Mini PCI-e Slot: 1 (Windows), N/A (Android)

## I/O PORTS (STANDARD)

USB: 2x USB 2.0 4x USB 3.0 (Windows), 2xUSB 2.0, 2x USB 3.0 Micro USB for OTG (Android)  
Serial: 4xRJ45 (with the power option) (Windows), 2x DB9 (Android) LAN: 1x Gigabit Lan  
VGA: D-SUB15 with power options (Windows), N/A (Android)  
Cash Drawer: x1 Direct IO Access (Windows), N/A (Android)

## I/O PORTS (OPTIONAL)

2nd LAN: 1x Gigabit LAN (Windows), N/A (Android)

## OPTIONAL PERIPHERALS

MSR: IDTECH or Magtek Readers  
Webcam: 2.0MP  
Wifi & Bluetooth: Wireless a/b/g/n/ac, Bluetooth 5  
2D Barcode Scanner: Honeywell 2D Scanner with optional Driver's License Scanning Support  
Integrated Printer: Epson TM-M30 (Interfaces include: USB, Serial, Ethernet, WIFI)  
Podium Kiosk: Slim Printer Base

## OS SUPPORT

Windows 10 IOT Enterprise IOT 2019 LTSC, Windows 10 Professional, Android 9

## DIMENSIONS

Screen & Base: 21.5" (W) x 13" (H) x 8" (D)

Weight of Screen & Base: 18LBS

## ENVIRONMENT

Operating & Storage Temperature: 0°C ~ 35°C (32°F ~ +95°F), -20°C ~ 60°C (-4°F ~ 140°F)

Operating & Storage Humidity: 20% ~ 85% RH non-condensing



## KEY FEATURES

1	Sleek, Slim Design
2	Optional Webcam
3	21.5" Projected Capacitive Touch Screen
4	Wall Mountable
5	Multiple Base and Peripheral Options