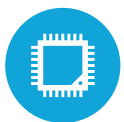




HIGHLIGHTS



Windows Intel® Whiskey Lake & Android Qualcomm CPU's



Standard NVME Storage



Swivel Base for Customer Facing Technology



15.6" Widescreen Projected Capacitive HD LED LCD



Slim & Sleek Next Generation Design

SPECIFICATIONS

MOTHERBOARD

Processor:

Intel® Whiskey Lake Celeron 4305UE up to 2.0 Ghz (Windows)

Intel® Whiskey Lake i3-8145UE up to 3.9 Ghz (Windows)

Intel® Whiskey Lake i5-8625U up to 4.1Ghz (Windows)

Qualcomm 450 1.8Ghz (Android)

System Memory: 1xDDR4 So-DIMM up to 32GB

Graphics: Intel® HD Graphics 620

DISPLAY

LCD Size: 15.6" LCD

Resolution: 1920 x 1080

LCD Brightness: 300 nits

LCD Backlight Type: LED

LCD Aspect Ratio: 16:9

Touch Glass: Projected Capacitive

STORAGE

Solid State Drive: Standard 128GB NVMe SSD

Optional 256, 512 & 1TB SSD

EXTERNAL I/O PORTS

USB Type A: 2x USB 3.0, 3x USB 2.0

USB Type C: 1x data only, 1x full functional

COM: 2x DB9 (powered RS232)

LAN: 1xRJ45

Cash Drawer: 1x RJ11

DC-IN: 1x 4 Pin w/ Lock

DP: 1x Mini FeDP

OPTIONAL PERIPHERALS

MSR: Integrated USB MSR (encrypted option available)

Barcode Scanner: Integrated 2D Barcode Scanner (programmable)

Fingerprint Reader

Rear Display : 2x20 USB VFD

Wireless LAN: Wireless a/b/g/n/ac

Bluetooth 4.0

TECHNICAL SPECS

Dimensions: 14.8" x 7.9" x 14.5"

Weight: TBD

Mounting Option: 100mm x 100mm VESA

OS Supported: Windows 10 IOT Enterprise, Windows 10 Pro,

Linux, Android 9



KEY:

1	15.6" LED Projected Capacitive Display
2	180° Swivel Effect
3	"Razor Thin" Bezel
4	Ergonomical Design
5	Multiple Port options
6	Smooth Black Finish