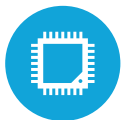




HIGHLIGHTS



Up to an Intel i7 Kaby Lake Processor



Up to 32GB RAM



Raid Support



Small Footprint



Multiple Port Options

SPECIFICATIONS

CPU PROCESSING

Intel Kaby Lake Series
Intel® Dual Core i3-7101TE, 3.4Ghz
Intel® Dual Core i5-7500T, 2.7Ghz, up to 3.3Ghz
Intel® Quad Core i7-7700T, 2.9Ghz, up to 3.8Ghz

Chipset: Intel Q170
System Memory: 2xDDR4 2133Mhz Short Dimm (32GB Max)
LAN: Intel LAN

Graphics: Intel HD Graphics DX12

CONTROL INDICATOR

Power Indicator LED: 1 HDD
Indicator LED: 1

STORAGE

2x2.5" Sata HDD or SSD
Optional RAID 1/0
Optional RAID 0/1/5
Optional nVMESSD

POWER

Power Adapter: Built-in Mini-ITX power adapter, Autoswitching

REAR I/O PORTS

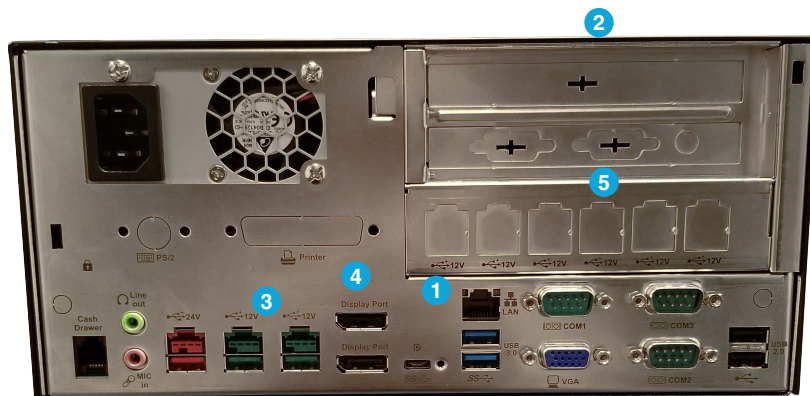
9 Total USB Ports:
2x 3.0, 2x 2.0 (back)
1x 3.0 (front)
1x Type C
2x Powered USB +12V
1x Powered USB +24V
Serial Ports: 3x DB9 with the power option
LAN: 1x Gigabit LAN, RJ45
VGA: 1
Cash Drawer: 1x RJ11 (12/42 Cash Drawer Port)
Display port: 2
Audio Line-out: 1
Audio Mic-in: 1

EXPANSION SLOTS

1x PCIe x1
1x PCIe x16
m.2: For Wireless

OPTIONAL PORTS

COM4/COM5/+12V out: 1
PS/2 Port: 1
Powered USB Hub: 6x +12V (Different power adapter required)



KEY FEATURES

| | |
|---|---|
| 1 | Rich I/O Port Selection |
| 2 | RAID Support with Hot Swap (Behind front panel) |
| 3 | 9 USB Ports (Including Powered USB) |
| 4 | Display Port, VGA, HDMI and DVI Support |
| 5 | Powered USB Hub Support |

ENVIRONMENT

Operating Temperature: 41°F ~ 105°C
Operating Humidity: 20% ~ 80% RH non condensing
Storage Temperature: 4°F ~ 140°F
Storage Humidity: 20% ~ 85% RH non condensing

OS SUPPORT

Linux, Windows 10 IOT, Windows 10 Professional

SPECIFICATIONS

Dimensions: 10.4" x 11.8" x 5.2"
Weight: 14.3 LBS