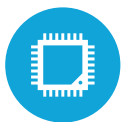




HIGHLIGHTS



Qualcomm 450 Processor



8" Projected Capacitive Screen



Rugged Sleek Design with IP65 Rating



Standard features include WiFi & Bluetooth



Compatibility with Google® & Apple® Pay Via the Ingenico RP457 and IDTech VP3300 Reader Options

SPECIFICATIONS



Standard on Quest VIII Android

MOTHERBOARD

Processor: Qualcomm 450 up to 1.8Ghz
System Memory: 3GB

DISPLAY

LCD Size: 8" Projected Capacitive Corning Gorilla Glass®
LCD Resolution: TrueHD 1920 x 1200
Brightness: 500 nits (High Brightness LCD)

STORAGE

32GB eMMC

BATTERY

Battery: Hot Swappable, 3.8V, 28.95W, 7560mAh, Dual Cell

CONNECTIVITY:

Wireless: 802.11 a/b/g/n/ac
Bluetooth: 4.0+LE (Class 2)
NFC: 13.56 Mhz (Optional)
GPS (Optional)

CHARGING METHODS:

Charging Cord: Plugs into the bottom of the tablet (Standard)
Charging Cradle: (Optional)
Premium Dock: Comes with 3 x USB, 1 x COM, 1 x LAN (+12V powered USB Optional)

STANDARD:

Speaker: x2
Microphone: x1
USB: Type -C
Audio Jack: x1

OPTIONAL PERIPHERALS:

Multi Tablet 5 Bay Charging Station
Multi Battery 5 Bay Charging Station
Integrated Honeywell® 2D Barcode Scanner (High & Standard Optional)
MSR: IDTECH and Magtek
IDTECH VP3300 Payment Device: EMV & MSR compatible with Apple® & Google® Pay
Ingenico RP457c Payment Device: EMV & MSR compatible with Apple® & Google® Pay
Minismart 2® EMV Reader
Augusta® EMV Reader
Age/ID Verification: Honeywell® EasyDL 2.0 Scanning
Camera: 2MP Front Camera

ENVIRONMENT:

Operating Temperature: 0°C ~ 40°C (32°F ~ 104°F)

CERTIFICATE:

EMC & Safety: FCC Class B, CE
Dust & Water Proof: IP65 Front Bezel

DIMENSIONS:

Dimensions: 5.8" x 9.5" x 0.66"
Weight: 1.32 LBS

OPERATING SYSTEM:

Android Pie 9



1	8" Projected Capacitive Touch Screen
2	Sleek, Slim Design
3	Optional Front Camera
4	Optional Charging Cradle
5	Premium Dock Offers Swivel Capability
6	Premium Dock Lock Keeps Tablet Secure
7	Premium Dock with Multiple Port Options
8	Multiple Optional Payment Readers