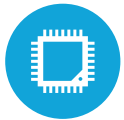




HIGHLIGHTS



Projected Capacitive Touch Screen



3 CPU Options Available



Up to 16GB RAM



Rackable Motherboard



Fanless Design

SPECIFICATIONS

PROCESSING

Intel® Celeron® 3955U Dualcore 2.0Ghz
Intel® Core® i3- i3-6100U 2.42Ghz Skylake
Intel® Core® i5-6100U 2.4 Ghz Skylake

Memory: 2xDDR3L SoDIMM up to 16GB
Intel HD Graphics: Intel® HD Graphics 510 (3955u)
Intel® HD Graphics 520 (i3 & i5)

LCD PANEL

LCD Size: 15"
LCD Type: LED LCD
Brightness: 300 nits
Aspect Ratio:4:3
Touch Screen Type: Projected Capacitive
Screen: Bezel-less True Flat

STORAGE

Solid State Drive: Standard 128GB SSD
Optional 256 GB SSD & 512 GB SSD

POWER ADAPTER

Integrated 90W 19V 3.4A DIN Connector

DIMENSIONS

15" with base; 13.6" H x 16.9" W x 9.9" D (with MSR)
Weight on Standard base: 17 LBS

Expansion

Mini-PCI Express Slot: 1

I/O PORTS (STANDARD)

USB: 2 x(USB 2.1) 4 x(USB 3.0)
Serial: 4xRJ45 (COM 2, 3, 4 powered option +5V/+12V)
Powered USB: Optional 1x +12V and 1x +24V
LAN: x2
Cash Drawer Port: 1x(+12V/+24V)
2nd VGA: 1 x D-Sub15 (Power Option Available)
3rd VGA: 1x Display Port

OPTIONAL PERIPHERALS

MSR USB: Encrypted Option Available Fingerprint
Reader: Digital Persona (USB Interface)
Rear LCD: 8" x 15" (Touch Optional)
Customer Display: 2 x 20 VFD Display
Wireless LAN: 802.11 a/b/g/n/ac
Scanner: 2D Barcode Scanner

Stereo Speakers

Pin Pad Mount

OS SUPPORT

POS Ready 7, Windows 8.1 Industry Retail Pro, Windows
10IoT Windows 10 Pro, Linux (*All options are 64 Bit Only)



KEY FEATURES

1	15" Projected Capacitive Touch Screen
2	USB MSR and other optional peripherals available
3	Multiple Base options
4	Rackable Motherboard