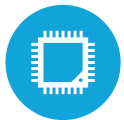




**HIGHLIGHTS**



21.5" Projected Capacitive Touch Screen



Available in Windows and Android



Next Generation Design



Sealed Bezel on Android Version

# SPECIFICATIONS

## PROCESSING

Intel® Celeron J6412 up to 2.6Ghz Elkhart Lake (Windows)

Intel® i3-1115G4 up to 4.1Ghz Tiger Lake (Windows)

Qualcomm Snapdragon 450 up to 1.8Ghz (Android)

## MEMORY

1x DDR4 up to 32GB (Windows), 3GB (Android)

## STORAGE

M.2 NVMe SSD 128B (Windows), 32GB (Android)

## LCD & TOUCH

LCD Size: 21.5"

LCD Aspect Ratio: 16:9

LCD Native Resolution: 1080x1920 Pixels

LCD Brightness: 250 nits

Touch Panel: True Flat Projected Capacitive Touch

Qualcomm Snapdragon (Android): Sealed Bezel Design

## EXPANSION

M2 Slot x1 (Windows), N/A (Android)

## I/O PORTS (STANDARD)

USB: 2x USB 2.0, 2x USB 3.0, 2x USB-C (alternate mode support for Tiger Lake) (Windows)

USB: 2x USB 2.0, 2x USB 3.0, 1x USB-C, 1x Micro USB (OTG) (Android)

Serial: 2x DB9 with the power option

LAN: 1x Gigabit Lan

Video Port: Custom miniDP convertible to VGA or HDMI

Cash Drawer: RJ12 Direct I/O access or OPOS support

## I/O PORTS (OPTIONAL)

2nd LAN: 1x Gigabit LAN (Windows), N/A (Android)

## OPTIONAL PERIPHERALS

MSR: IDTECH or Magtek Readers

Webcam: 2.0MP

Wifi & Bluetooth: Wireless a/b/g/n/ac/ax (Windows) a/b/c/n/ac (Android), Bluetooth 5

2D Barcode Scanner: Honeywell 2D Scanner with optional Driver's License

Scanning Support

Integrated Printer: Epson TM-M30 (Interfaces include USB, Serial, Ethernet, WIFI)

Podium Kiosk: Slim Printer Base and Edge Ultra Base

## OS SUPPORT

Windows 10 IOT, Windows 11 Professional, Android 9

## DIMENSIONS

Screen & Base: 21.5" (W) x 13" (H) x 8" (D)

Weight of Screen & Base: 18LBS

## ENVIRONMENT

Operating & Storage Temperature: 0°C ~ 35°C (32°F ~ +95°F),  
-20°C ~ 60°C (-4°F ~ 140°F)

Operating & Storage Humidity: 20% ~ 85% RH non-condensing



## KEY FEATURES

1	Sleek, Slim Design
2	Bezel-less Touch Screen
3	21.5" Projected Capacitive Touch Screen
4	Wall Mountable
5	Multiple Base and Peripheral Options