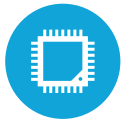




HIGHLIGHTS



Projected Capacitive Touch Screen



2 CPU Options Available



Up to 32GB RAM



Slim and Sleek Finish



Available in 15" or 17" Display

SPECIFICATIONS

PROCESSING

CPU: Intel® Celeron J6412 up to 2.6GHz Elkhart Lake®
 Intel® i3-1115G4 up to 4.1Ghz Tiger Lake®
 System Memory: 1x DDR4-LV SODIMM 4GB (up o 32GB Optional)
 Graphics Memory: Intel HD Graphics, 500

LCD PANEL

LCD Size: 15" & 17"
 LCD Backlight type: LED
 Brightness: 350 nits
 Maximum Resolution: 1024 x 768 (15") 1280 x 1024 (17")
 Touch Screen Type: Projected Capacitive (USB Interface)
 IP Rating: IP65
 Screen: Bezel-less True Flat

STORAGE

Solid State Drive: Standard 128 GB NVME
 Optional 256 & 512 GB SSD

POWER

Power Supply: 65W (J6412), 120W (i3)
 EMC & Safety: FCC / CE Class A, LVD Operating
 Temperature: 5°C ~ 35°C (41°F ~ 95°F)

DIMENSIONS

15" with base; 13" H x 14 7/8" W x 9" D (with MSR);
 Peripheral Variation (Width only): 15 5/8" (with fingerprint);
 16" (with MSR and Fingerprint)

EXPANSION

M.2 Slot: 1 Optional

I/O PORTS

USB: 2x USB 3.0, 2x USB 2.0
 USB Type C: 1x USB 2.0 (data only) & 1x USB 3.0 (data only) J6412
 1x USB 3.0 (data only) & 1x USB 3.0 (including alternative video mode) i3
 Serial: 3x RJ45 with DB9 Adapters (COM3, 4 powered with 5V/12V, by BIOS)
 COM: 2x DB9
 Gigabit LAN: 1x RJ45
 Cash Drawer Port: 1x RJ11 (12V / 24V)
 DC Jack: 1x 4 pin with latch
 Video Port: 1x Customized miniDP (convertible to VGA or HDMI)
 PS/2: N/A
 Audio Out: 1 Set (Optional)
 Display Port: 1 (Optional)

OPTIONAL PERIPHERALS

MSR USB: Encrypted Option Available
 Fingerprint Reader: Steel Coat Crossmatch (USB interface)
 Rear LCD: 8.4" x 15" (Touch Optional)
 Customer Display: 2 x 20 VFD Display
 Wireless LAN: 802.11 b/g/n/ac
 Scanner: 2D Barcode Scanner
 Pin Pad Mount

OS SUPPORT

Windows 10 IOT and Windows 11 PRO



KEY FEATURES

1	15 LED LCD Projected Capacitive Display
2	Optional Rear Customer Display (sizes available)
3	External I/O Ports (15 total)
4	Optional Integrated Fingerprint Reader
5	Optional MSR