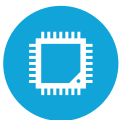




HIGHLIGHTS



Windows Intel® Elkhart Lake and Tiger Lake CPUs



NVMe Storage with DDR4 RAM



360° Swivel Base for Customer Facing Technology



15.6" Widescreen Projected Capacitive HD LED LCD



Slim & Sleek Next Generation Design

SPECIFICATIONS

MOTHERBOARD

CPU:

Intel® Elkhart Lake Celeron® J6412 up to 2.6 Ghz (Windows & Android)

Intel® Tiger Lake i3-1115G4 up to 4.1 Ghz (Windows)

Intel® Tiger Lake i5-1135G7 up to 4.2Ghz (Windows)

System Memory: 1xDDR4 So-DIMM up to 32GB

Graphics: Intel®HD Graphics 620

DISPLAY

LCD Size: 11.6" LCD, 15.6" LCD

Resolution: 1920 x 1080

LCD Brightness: 300 nits

LCD Backlight Type: LED

LCD Aspect Ratio: 16:9

Touch Glass: Projected Capacitive

STORAGE

Solid State Drive: Standard 128GB NVMe SSD

Upgradable to 256GB, 512GB, 1TB NVMe SSD

EXTERNAL I/O PORTS

USB Type A: 2x USB 3.0, 3x USB 2.0

USB Type C: 2x USB-C

COM: 2x DB9 (powered RS232)

LAN: 1xRJ45

Cash Drawer: 1x RJ11

DC-IN: 1x 4 Pin w/ Lock

Additional Display: 1x Mini FeDP

OPTIONAL PERIPHERALS

MSR: Integrated USB MSR (encrypted option available)

Barcode Scanner: Integrated 2D Barcode Scanner (programmable)

Fingerprint Reader

Rear Display : 2x20 USB VFD

Wireless LAN: Wireless a/b/g/n/ac

Bluetooth 4.0

TECHNICAL SPECS

Dimensions: 14.1/2"W x 14.5"H x 7.9"D on Swivel Base

14 1/2"W x 15"H x 11"D on Slim Printer Base

Weight: 6.85 LBS with Swivel Base

18.80 LBS on Slim Printer Base

Mounting Option: 75 X 75 VESA

OS SUPPORT

Windows 10 IoT LTSC, Windows 11 IoT GAC, Windows 11 Pro
Linux, Android 13



KEY:

1	11.6" and 15.6" LED Projected Capacitive Display
2	360° Swivel Effect
3	Ergonomic Design
4	Razor Thin Bezel
5	Multiple Port options
6	Smooth Black Finish